

SHALLOW MOUNT FIXED BOLLARD

FXB-CT | ULTRASHALLOW



Security Systems

SHALLOW MOUNT FIX BOLLARD | FXB-CT-ULTRASHALLOW

Optima Shallow Mount Crash Tested Fix Bollards are designed for vehicle enterances, military, industrial, governmental and commercial buildings or streets which are closed to vehicle traffic permanently. Optima FXB-CT-Ultrashallow bollards are suitable solutions for the places in which deep foundation is not possible. The bollard depth is only 20 cm.



SYSTEM FEATURES

MODEL	FXB-CT-ULTRASHALLOW
Bollard Height	1200 mm
Bollard Diameter	273 mm
Foundation Size	4500 x 2500 x 400 mm (triple unit)
Installation Depth	200 mm concrete
Crash Test	PAS68:2013 V/7200(N2)48/90
Impact Load	673 kJ (7.2 t@ 30 mph)
Material	St37 Steel and optionally stainless steel sleeve

ACCESSORIES

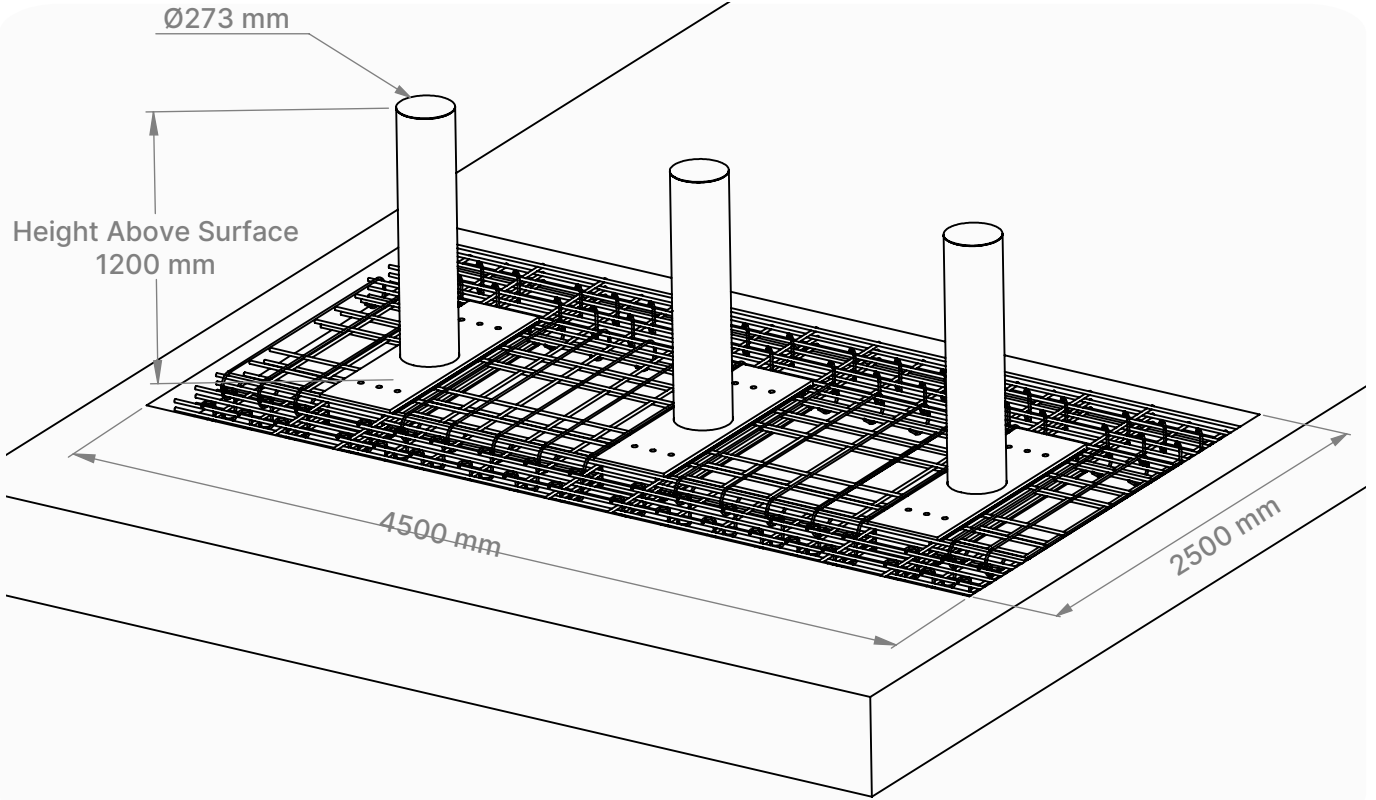
Accessories marked with (*) are optional.

■ Different color options *

■ Flashing light on top of bollard *

BODY MEASUREMENTS

ISOMETRIC VIEW



TOP VIEW

